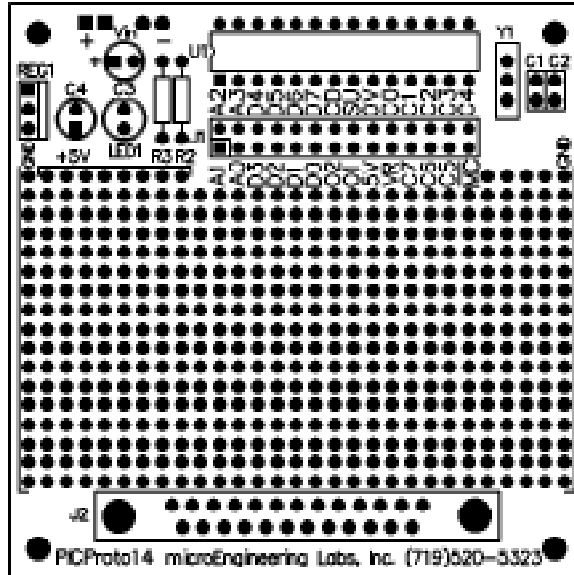


PICPROTO™14 Prototyping Board

Copyright ©2006 microEngineering Labs, Inc.

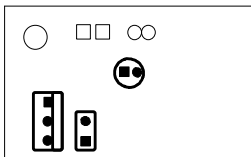
\$14⁹⁵

- ❖ High quality double-sided board
- ❖ Solder mask both sides
- ❖ More than 500 plated-through holes
- ❖ 4 mounting holes
- ❖ Overall dimensions 3" X 3"

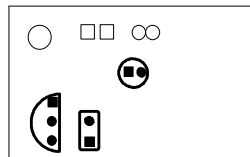


- U1 - PIC14000
- Y1 - crystal or ceramic resonator
- C1, 2 - crystal capacitors
- C3 - input capacitor
- C4 - bypass capacitor
- REG1 - 5 volt regulator
- LED1 - LED
- R2 - Master Clear resistor
- R3 - LED series resistor
- J1 - PIC I/O connector
- J2 - DB9, 15, or 25
- Vdd - plus 5 volt buss
- GND - ground buss

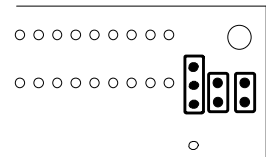
PARTS PLACEMENT:



TO-220 Regulator
REG1 = 7805T
C3 = .1 - 10uf
C4 = .01 - .1uf



TO-92 Regulator
REG1 = 78L05
C3 = .1 - 10uf
C4 = .01 - .1uf



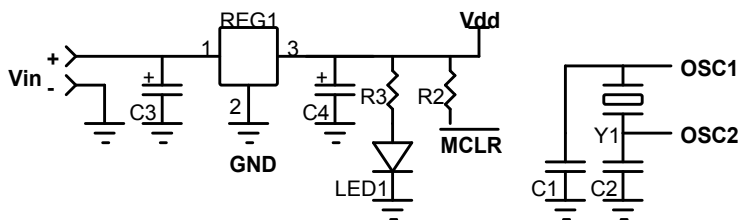
Crystal or Ceramic Resonator
Y1 = 4 - 20MHZ
C1, 2 = 10 - 68pf

ASSEMBLY NOTES:

Pin 1 of U1 is marked with a square pad.
Note polarity of Vin, REG1, LED1 and any polarized capacitors.

Don't forget to pull-up Master Clear to Vdd.
All unused inputs should be tied to Vdd or ground.

SCHEMATIC:



SOURCES:

PIC® documentation is available from:
Microchip Technology Inc.
2355 West Chandler Blvd.
Chandler AZ 85224-6199
(480) 792-7200
(480) 792-7277 fax

microEngineering Labs, Inc.